



## Renders & Aggregates



ACRYLIC RENDERS | POLYMER RENDERS | SUREREND RENDERS | DRY-DASH AGGREGATES





*Through continual technical development, the Enewall product range is unsurpassed in quality and performance. Tried and tested, our products have been relied upon in the construction industry and Enewall are known as the professional's preferred choice.*



Formerly Powerwall, Enewall was formed over 25 years ago and was the first to develop polymer modified renders in Scotland. Enewall have built a very successful business and are recognised as the industry leaders in the manufacture and supply of premixed renders, stone aggregates and external wall insulation.

Enewall is the first company to design and build a plant specifically for the manufacture of all types of render and cement based adhesives. With the purpose built facilities, the 15 acre site in Wishaw, Scotland is able to continually evolve the product range, through extensive research and development initiatives and is capable of handling an ever increasing demand for new and refurbishment projects. Along with the offices in Dartford, Kent, Enewall is able to service clients throughout the UK.

Enewall is passionate about all of their clients – whether individuals, businesses, social housing providers or local authorities and they provide a long standing commitment to supplying the best possible service to their clients. Enewall's clients span across the domestic and public sectors as well as all major groups of the commercial market.

Enewall is part of the EneGroup of companies which consists of Enewall which provides render, aggregates, adhesives and external wall insulation, Enevis which offers a wide range of renewable energy and engineering services and Enemetric a company that specialises in volumetric construction.







Our team is the best in the industry. Our clients tell us it is the people who make Enewall such a great company to work with."

## Our People

At Enewall, we invest in our staff to ensure we retain our most talented people.

Our aim is to nurture expertise for the future and maintain the exceptional standards of our existing workforce, enabling us to exceed client expectations, through development plans, training and apprenticeships.

We pride ourselves on prompt, professional and courteous service, coupled with high quality workmanship and attention to detail. We believe in a can-do attitude at every stage of a project. We understand the importance of communicating closely with our clients and customers to obtain the best possible conclusion to their particular project, however large or small.

The priority of our business is to ensure all our activities are managed to the highest possible health, safety and environmental standards. We are a business in which people come first whether that is the wider communities in which we operate, or our own workforce.

All our work is subject to independent validation as well as the scrutiny of the relevant regulatory authorities. Enewall Renders are BBA approved, with a 30 year life expectancy for its polymer renders, or a 60 year life expectancy with the use of Enewall External Wall Insulation Systems. In the opinion of the BBA, the Enewall Render System, if installed, used and maintained in accordance with the BBA Certificate, will meet or contribute to meeting the relevant requirements of the Building Regulations.

## Our Service

Enewall have an established reputation for excellent product commercialisation, with certification and research forming the backbone of its development strategy.

Our research and development team continually strive to improve products in terms of functionality and cost, providing you with an optimal cost effective solution whilst maintaining and improving the product performance. Constant assessment by leading certification organisations such as BRE, Warrington Fire Testing and BBA secures absolute quality and performance in all our products.

Our established Enewall trade counter provides a bespoke collection service and offers a wide range of comprehensive renders and aggregates along with experienced members of staff who are on hand to help guide you when choosing the right materials for the job.

The trade counter facility based at our Head Office in Wishaw, allows our customers to collect their purchases throughout the day and we have recently extended our trade counter opening hours as part of our continuous expansion programme.

Enewall has a wide range of products available to the industry and we recognise that architects, specifiers, consultants, contractors and roughcasters need to have confidence in the products they use.

Enewall can provide a specification tailored for each specific project.

Training is available at our academy offering comprehensive training courses on all of our product ranges as well as RIBA approved CPDs. For further information on the courses available, please contact our Training Manager on 01698 373 305.



[www.enewall.co.uk](http://www.enewall.co.uk)



“Render is a decorative aid to weather proofing a building substrate to ensure its structural integrity.”



Enewall provides a highly specialised range of render finishes formulated to be protective, durable, waterproof and give an extraordinary aesthetic finish.

We pride ourselves on our polymer based range of render products being BBA certified and are readily specified by architects and clients more than any other comparable product.

There are several benefits to our modern factory produced renders, which will ensure your project is finished to a high standard:

- Quality control
- Colour consistency
- Greater selection of finish
- More economical as there is less wastage
- Made in Scotland



### Polymer Renders

The Polymer render range has been developed to cope with a wide range of specifications and applications and provides proven hi-tech polymer fibre reinforced renders suitable for most applications.

#### Usage

This range is suitable for both new build and refurbishment projects and is regularly used as part of Enewall's external insulation and cassette walling systems.

#### Strength

The Polymer range has excellent adhesion and high impact resistance combined with high resistance to cracking and spalling. The range is available in a range of colours to suit any application.

#### Mixing & application

The Polymer render can be easily applied traditionally or by a render pump. The range only requires the addition of water and paddle mixing or to be mixed in a traditional mixer on site.

#### Environment

The Polymer render range is tried and tested in commercial, residential and industrial environments.

### Surerend Renders

The Surerend render range is part of our highly successful range of traditional renders manufactured from a blend of selected aggregates, sand, cement and additives.

#### Usage

Predominantly used for new build projects, however can be applied to most correctly prepared substrates.

#### Strength

The Surerend range provides a tough virtually maintenance free finish and is available in a range of colours to suit any application.

#### Mixing & application

The Surerend range, like the polymer range, needs only the addition of water and paddle mixing or a traditional mixer onsite. The range can then be applied traditionally or by a render pump.

#### Environment

The Surerend render range has been tried and tested in commercial, residential and industrial environments.

### Acrylic Renders

The acrylic render is a 100% acrylic based product with integral colour pigments and specially selected marble aggregates. We have a range of over 200 colours to choose from in a 1.5mm aggregate.

#### Usage

The range has been designed to work in both new build and refurbishment projects. This product's flexible qualities mean that it is an ideal finish for use with Enewall's external insulation and cassette walling systems.

#### Strength

The range uses quick cure technology to provide a highly flexible and waterproof finish.

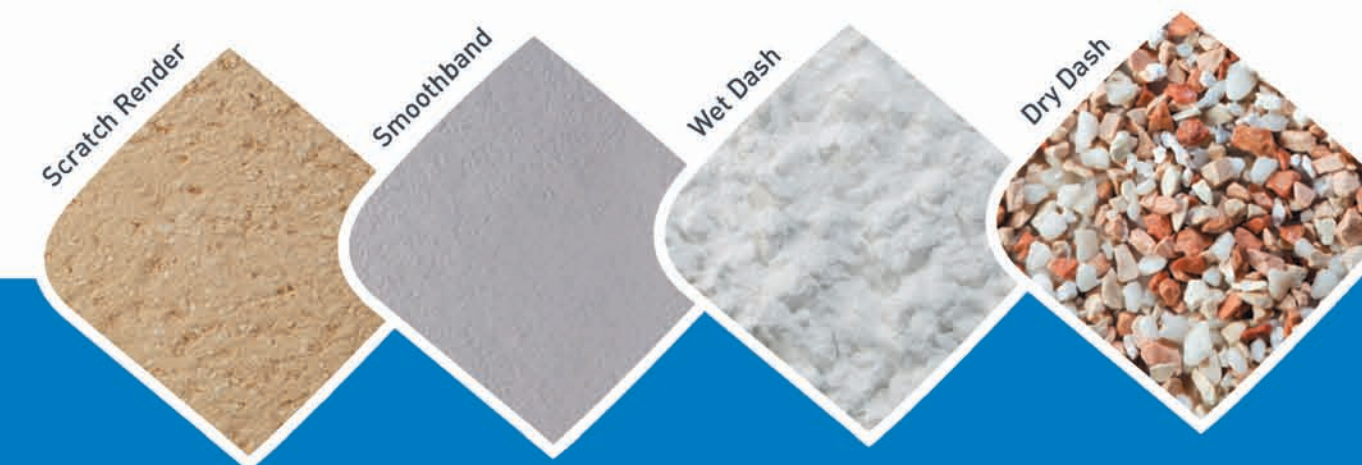
#### Mixing & application

Our unique acrylic renders are pre-mixed and can be applied either by trowel or by spray.

#### Environment

The acrylic render has been tried and tested in commercial, residential and industrial environments.

*\*\*Cement renders are produced from natural materials and colours may vary. All products must be used in accordance with Enewall's specification.*



Please note that certain products, colours and finishes are subject to a minimum order quantity. Please contact the sales office for further information on: **01698 373 305**

[www.enewall.co.uk](http://www.enewall.co.uk)

\* 30 year life expectancy for its polymer renders, or a 60 year life expectancy with the use of Enewall External Wall Insulation Systems.





Dry-dashing render spars continue to be a popular decorative finish to external walls, specified for appearance as well as offering great performance and value for money.”



At Enewall we are known for our extensive range of dry-dash aggregates and we offer a wide range of colours to suit most requirements.

These products have been carefully sourced from quarries around the world with an emphasis on sustainability and quality.

We work in partnership with render sub-contractors throughout the UK, for large residential and commercial projects. As well as working with public and private specifiers, local authorities and housing associations for RMI.

We hold large quantities of our most popular aggregates in stock and we are able to supply any non-stocked aggregates within a few days.

All our dashing aggregates are available in 25kg bags with a selective amount available in bulk bags.

We are also able to offer a chip matching service for specific contracts if required.



Dolowhite



Nordic White



Ashton Cream



Harvest



Huntington Beige



Orchid



Rose Pink Flint



Sunset Gold



Tuscan



Iceberg



Regent 80/20



Tudor 80/20



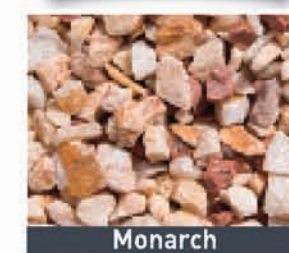
Champagne



Brightstone Cream



Sky Marble



Monarch



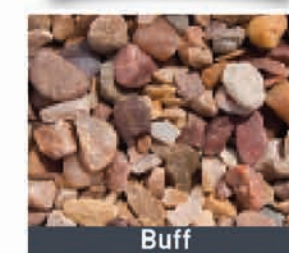
Dawn



Yellow Sienna



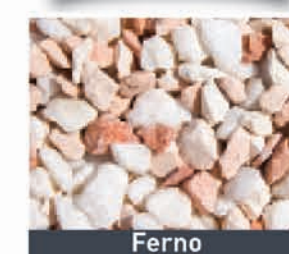
Yellow Sienna 50/50



Buff



Barleycorn



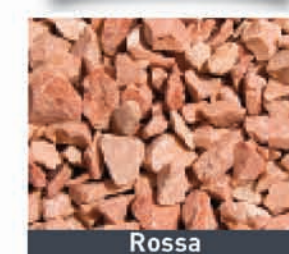
Ferno



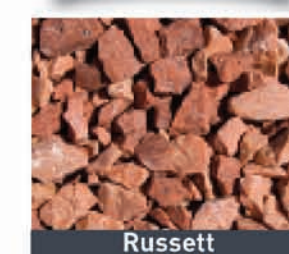
Derbyshire Spar



Jersey Cream



Rossa



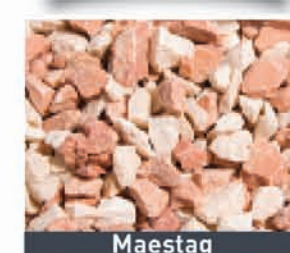
Russett



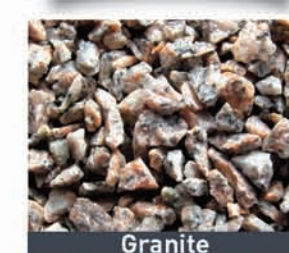
Calcined Flint



Lanark Red



Maestag



Granite



Please note that certain products, colours and finishes are subject to a minimum order quantity. Please contact the sales office for further information on: 01698 373 305

[www.enewall.co.uk](http://www.enewall.co.uk)



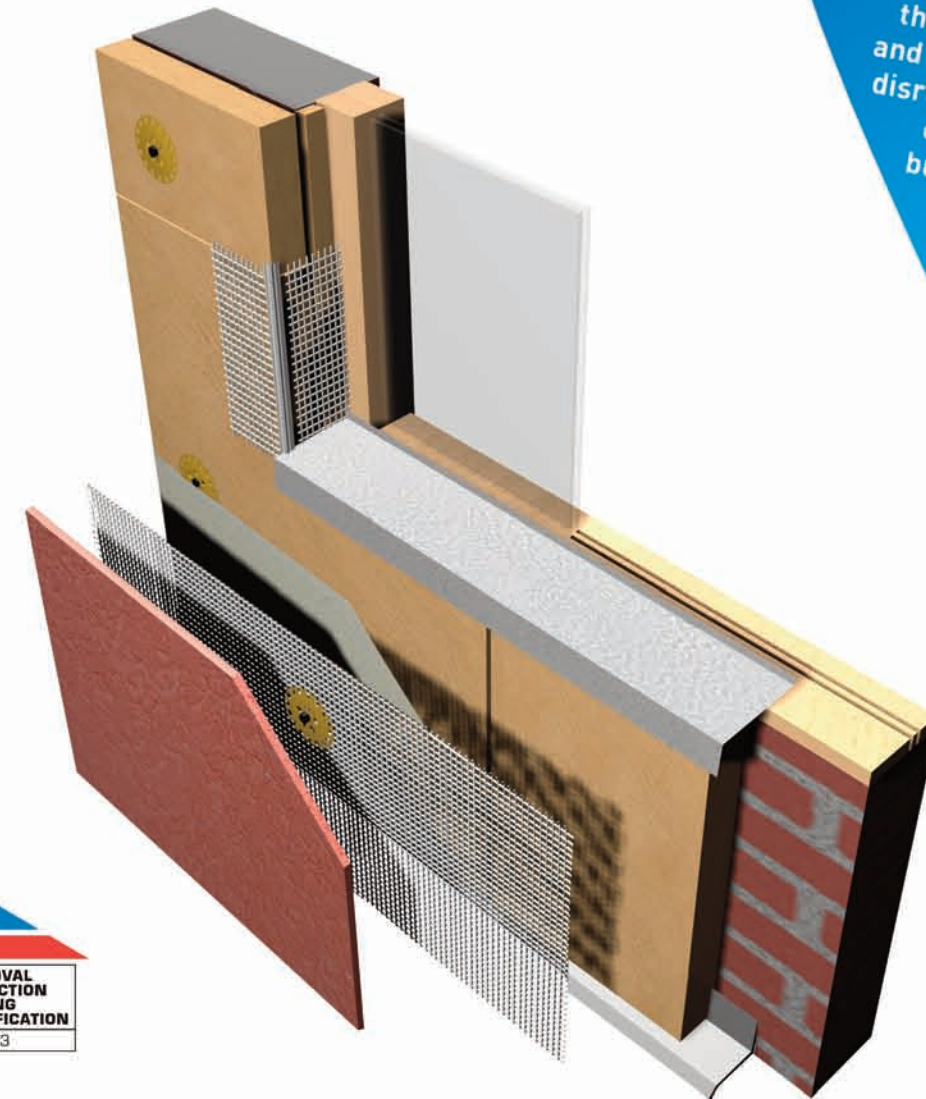
# External Wall Insulation

The Enewall Insulation systems increase the comfort levels, as well as totally transforming the appearance of the built environment.

The External Wall Insulation systems offer a complete solution for any type of building, ranging from low rise to high rise, with a wide range of finishes including renders, brick slips, modern acrylic coatings and cladding which not only reduce heat loss but also deliver all of the following advantages;

- Green Deal & ECO Compliant
- Reduced CO2 emissions
- Stops condensation
- Helps prevent mould and fungus growth
- Increases thermal efficiency
- Stops draughts
- Lowers heating cost
- Improved aesthetic finish
- No reduction in interior floor space
- BBA Approved
- Insurance backed warranties available

u-value calculations are available upon request.



External Insulation is the simplest and easiest way of thermally upgrading homes and buildings without massive disruption as all works can be carried out whilst the buildings are occupied.

# Honeycomb

Our unique Honeycomb panel is a new concept for 21st century building and is now being recognised as a genuine alternative to brick and mortar.

The Honeycomb panel is ultra-lightweight with exceptional tensile and flexural strength achieving unrivalled technical performance. The breathability of the system allows free passage of vapour and any accidental ingress of water is drained away through perforations in the honeycomb foil.

## What is a Honeycomb Panel?

The Honeycomb Panel is a composite material and the panels are produced using a honeycomb core, lined with two layers of fibreglass skin bonded to the core by means of a special structural adhesive.

The Honeycomb Panel is suitable for widespread applications, such as:-

- Marble
- Naval Sector
- Furniture
- Building Sector
- Automobile, aviation & train sectors
- Artistic applications, restorations, mosaics



Vented & drainable cavity barrier



For further information on our External Wall Insulation systems please call: 01698 373 305 for our technical brochure or visit [www.ewall.co.uk](http://www.ewall.co.uk)

[www.ewall.co.uk](http://www.ewall.co.uk)

Corporate Social Responsibility (CSR) is about improving the way your business responds to the needs of stakeholders. This means that it is relevant to companies of all sizes within the industry supply chain, including clients, designers, contractors, the suppliers of materials and the local community. The Enewall Corporate Social Responsibility Policy provides all of our members of staff with a framework for the way we do business. Our CSR Policy enables us to have a positive impact on those that we interact with and help us to be a better employer, contractor and member of the community. Enewall is committed to ethical behaviour and to sustainable economic development, while improving the quality of life of its workforce and their families, as well as the local community and society at large. CSR matters because the impact of our industry upon society is immense. The way the built environment is designed and developed shapes the way we live, move, and work.



RENDER IS A DECORATIVE AID TO WEATHER  
PROOFING A BUILDING SUBSTRATE TO  
ENSURE ITS **STRUCTURAL** INTEGRITY.



4 Netherton Road, Wishaw, Lanarkshire, Scotland, ML2 0EQ  
t. **01698 373 305** f. **01698 374 503**

Priory House, Twisleton Court, Dartford, Kent, DA1 2EN  
t. **01322 284 555** f. **01322 228 156** w. [www.enewall.co.uk](http://www.enewall.co.uk)

